



# Eversholt Newsletter

Believe Achieve Succeed

4th April 2025

## DIARY DATES

### New entries in RED

- April
- 22nd Inset Day
- 23rd Start of the Summer Term
- 29th KS1 Tennis Festival (selected team)
- 30th **Mini Marathon Event—details to come**
- May
- 2nd Yr 4 Transition Event—Parkfields
- April 100 Club Draw
- 3rd 4Everlove—Village Hall
- 5th Bank Holiday
- 7th **Coffee Morning Supporting Mental Health—details to come**
- 13th KS2 Kwik Cricket (selected team)
- 14th **Sun Class Assembly 9am School Hall**
- 20th Eversholt Amble (TBC)
- 21st **Star Class Assembly 9am School Hall**
- June
- 3rd KS1 Rapid Cricket (selected team)
- 4th **Moon Class Assembly 9am School Hall**
- 6th KS2 Quad Kids (selected team |)
- May 100 Club Draw
- 11th Star and Moon Class School Trip
- 13th Summer Variety Show
- 16th **Whole School, Class & Leavers Photos**
- 17-20th Year 4 York Residential
- 24th Sports Day 1st Choice
- 25th Sports Day 2nd Choice
- 29th Leavers vs Stayers Cricket
- July
- 1st KS2 Recorder Performance The Grove Theatre, Dunstable
- 3rd Eversholt Transition Morning
- 8th Parkfields Transition Day
- 11th Final Summer Movie Night

Good attendance is linked to good results

What a wonderful end to the Spring Term!

The iRock Bands performed brilliantly on Monday, and it has been fantastic to see how far they have progressed this term.

Tuesday was filled with excitement during the **Interhouse Competitions**—well done to **Howland** our winning house this term!

On Wednesday, we were delighted to welcome eight members of the **Peregrine Orchestra** for a special concert. The orchestra featured **eight different sizes of recorders**, ranging from the smallest a garklein to the largest a contrabass —something I had only ever seen in pictures before!

**Sun Class** gave a fantastic performance in their end-of-term recorder concert for parents and Year 2 pupils.

And finally, what a joyful celebration we had in church this morning! The **Easter bonnets** looked absolutely wonderful—you always amaze me with your creativity. The church will certainly be bright and colourful over the Easter period.

Thank you for all your support this term. From myself and the team, we wish you a **restful Easter break**, and we look forward to welcoming the children back to school on **Wednesday, April 23rd**.



*Mrs Miller*

## March 100 Club Winners



<b>1st Place</b>	<b>46—Gabriel Gilhooly</b>
<b>2nd Place</b>	<b>30—Alice Greene</b>
<b>3rd Place</b>	<b>16—Nora Shanley</b>



Visit our website [here](#)

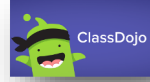
Visit our Facebook Page [here](#)

We welcome volunteer support, and provide enhanced DBS checks.

**Ever-Ready Ever- Respectful Ever- Safe**



**Writing**—Hugo G, James P  
**Science**—Hugo P, Thora  
**Maths**—Leyla, Louis, Hunter  
**Art**—Lucas, Oak  
**Reading**—Zach, Teddy, Alba  
**RE**—Stella, Sophie  
**Geography**—Ethan, Harry  
**Phonics**—Jude



Total of House DOJOs awarded over the last week (and week before)

BEDFORD		108	
HOWLAND		82	
RUSSELL		79	
TAVISTOCK		110	



Leyla, Hugo M, Hugo P,  
Jude, Matilda, Lexi



## Sports Stars



Ava



James L



Isobel

## Out of School Achievements

**Swimming** —Larson, James P  
**Brownies**—Florence  
**Beavers**—James L  
**Rugby**—Hunter



Firstly a huge THANK YOU to everyone who has helped the fundraising team this term, the incredible teachers & all the super parents! THANK YOU for all your support.

There are 3 weeks to go until our recycling collection. Please share the initiative & put these dates in the diary:

THURSDAY 24TH APRIL 3.20PM - 6PM

FRIDAY 25TH APRIL 7.30AM - 9AM

At Eversholt Village Hall



Please share with neighbours, friends & family for a spring clean!!

SATURDAY 3 MAY 2025 7.30PM - 10.30PM

A coveted local music festival held every 2 years,



at Eversholt Village Hall supporting the school.

Tickets £10

<https://buytickets.at/4everlove/1629985>



WISHING YOU ALL A WONDERFUL EASTER!

[fundraising@eversholtschool.co.uk](mailto:fundraising@eversholtschool.co.uk)

## BIRTHDAY CELEBRATIONS



The children can come to school in their home clothes on the Friday following their birthday. This is not compulsory.

Our Composer and composition of the week



Bach—Prelude in C Major



The value we have been looking at this week is:

Spring/Easter and New beginnings

# Our learning this week

We have been on egg watch this week. It has been so exciting to see the lifecycle of a chicken play out before our eyes! Thank you to Mrs Cook for bringing in the chicks for us to observe. She also came and showed us different types of eggs from other birds to compare with the chicken eggs that we have. On Wednesday it was very exciting that we had our first chick hatch, we kept checking in to see the progress on all of the chicks. We read books about the lifecycle of chicks and learned all about the chick's egg tooth that they use to crack open the egg shell.

The rest of the week we have been learning all about the Easter story and the signs of spring. The children were excellent at talking about the meaning behind the Easter symbols and loved tasting some delicious hot cross buns (whilst singing the song!) We also went on a spring hunt around school to see all of the signs of spring and had fun painting daffodils in class.

In maths we have been learning about halving amounts into two equal groups. The children had a lot of fun cutting shapes into halves too!

Over the Easter holidays I am sending home a bean for you to grow at home. Make sure you keep the bean moist and in a bright space. We will love to see how your beans are growing after Easter when you bring them back to school. (Don't worry if you are going on holiday, you can start to water the beans when you get back).

Have a wonderful Easter break.



<b>Topic:</b>	Easter	Our topics next half term:  Jasper's Beanstalk Jack and the Beanstalk Rosie's Walk The Little Red Hen
<b>Literacy:</b>	Labelling parts of a plant Lifecycle of a bean plant What do plants need to grow?	
<b>Maths:</b>	3D Shapes Naming 3D shapes Talking about the properties of 3D shapes (Curves, straight, vertices, edges)	

# Our learning this week

In maths we have completed our work on measurement. The year 1's have been continued to measure using non standard units of measurement and the year 2's have used a metre ruler

We have continued to write our recounts of The Minpins and we are nearly done, everyone has been working so hard.

The year 1's have drawn diagrams to show the germination of a seed and the year 2's have illustrated the life cycle of the Oak tree.

We all enjoyed making fruit salad and handling the equipment correctly. We sat in the sun and ate, which was lovely.

We enjoyed listening to the Orchestra play the different recorders. We learnt so many facts about different recorders.

We enjoyed learning about different eggs and how they can be kept warm in an incubator. We were so excited when the chicks hatched. We celebrated new life!



English: The Bear and the Piano	Writing a recount of the story
Maths: year 1 year 2	Place value within 50 Times tables
Science: year 2 Plants Year 1 Plants	Life cycle of a plant Plants as a source of food
Geography	Seasons and weather
Art	Anthony Goldsworthy
PSHE: Being yourself	Uncomfortable feelings
RE	Inspiring people

# Our learning this week

The final week of term has been a hectic one in Sun Class, as we have been busily trying to finish off all the different topics that we have been working on. Our story writing has been moving on at pace, as we have been writing fantasy stories, featuring a giant, like the BFG. We have been trying to include speech, fronted adverbials and noun phrases in our work, and been sharing our writing with others to make sure that it makes sense, and editing it where necessary.

In maths, we have been finishing our multiplication and division topic, making sure that we are able to use remainders. We are just beginning to move on to fractions, as we move into next term.

In geography and RE we have been finishing off research about the climate zones of different countries and the festivals of different faiths. It has been really interesting comparing the similarities and differences between the different festivals.

In PE, we finished our tennis unit with Mr Clark, playing matches against each other. We also finished our Creative unit, in "Real PE" which focused on sending and receiving. We also really enjoyed the Inter-House competition, which involved a series of Easter related activities.

The recorder concert by the Peregrine Orchestra on Wednesday and our recorder concert on Thursday were also huge highlights of the week. It was also great to see the chicks hatching from the incubator.

HAPPY EASTER EVERYONE!!



English	The story of Tutankhamen
Maths	Fractions
Science	Sound
History	Ancient Egypt
Computing	Coding

# What we have been discussing in Picture News this week...



Should stadiums be used for more than just football?

## Let's look at this week's story

English football club, Manchester United, has announced plans to build the biggest stadium in the UK. The new stadium will cost around £2 billion, seat 100,000 spectators and will also be used for many other things, including concerts. It is thought the new development will be built close to the club's existing stadium, Old Trafford. Once it's ready, the current Old Trafford stadium may be demolished.

## Things to talk about at home ...

- > What is the closest football stadium to where you live? Is it ever used for things other than football?
- > Do you enjoy watching football or other sports? Have you ever been to a game in a stadium or perhaps visited one? Ask someone at home to share their experience.
- > Share your thoughts on the new stadium. Do you think it is a good idea?

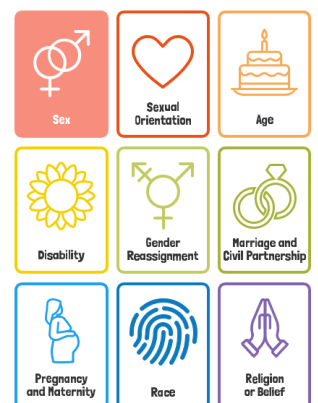


## Democracy

It's important for big decisions, like building a new stadium, to involve local communities. By holding meetings and using surveys, everyone's voices can be heard.

## Protected Characteristics

Both men's and women's teams can share new stadiums, showing that all players should be valued and treated fairly, no matter their sex.



## Useful Vocabulary

### Demolished

When a building or structure is completely destroyed or torn down. Once it's ready, the current Old Trafford stadium may be demolished.

### Design

A plan or drawing, that helps people when creating a new building, product or project. Look at some of the designs for the new stadium. Share which parts you like the most and why.



### Manchester United

A football club from Manchester, in the northwest of England, which was founded in 1878. English football club, Manchester United, has announced plans to build the biggest stadium in the UK.

### Spectators

The people who watch an event, such as a sport, concert or performance. The new stadium will cost around £2 billion, seat 100,000 spectators and will also be used for many other things, including concerts.

### Stadium

A large building, typically used to host sporting or entertainment events, which features a playing field or stage. It often has tiered seating for spectators. Manchester United's current stadium, Old Trafford, has been the team's home since 1910.

### Trident

A long spear with three prongs, that looks similar to a fork. It will have masts, inspired by the team's trident logo, and the tallest will be higher than any other building in Manchester.



## UN Rights of the Child



Children have the right to share their views on issues that affect them, and for their opinions to be taken seriously. When young people speak up, it helps ensure that projects, such as the new stadium, benefit everyone in the community.





# SCHOOL FUNDRAISING

More clothes -  
more funds for  
your organisation.  
**1 kg = £0.45**

YOUR COLLECTION IS ARRANGED ON:

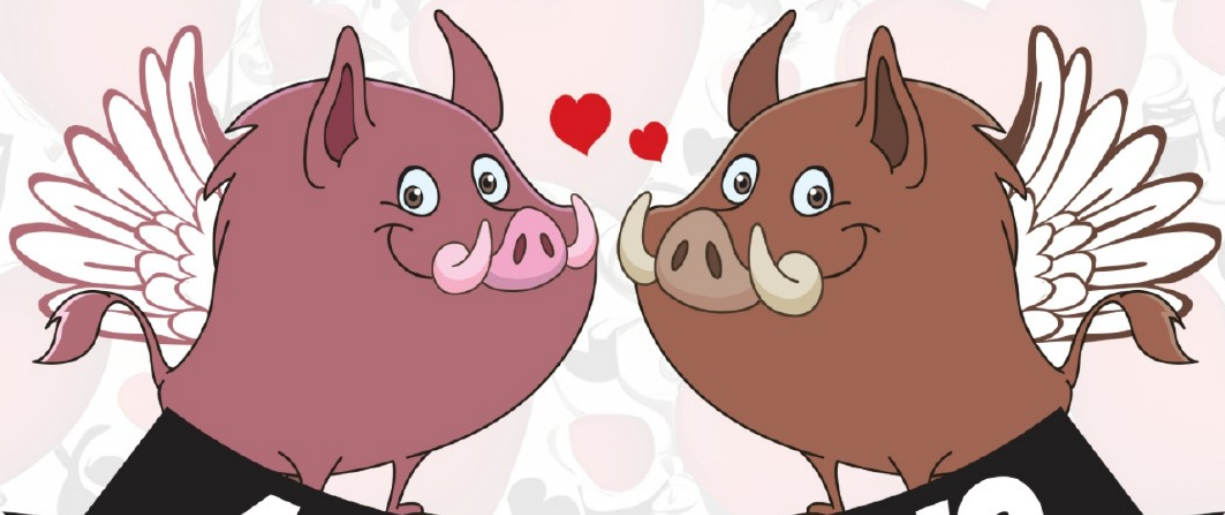
**3.20pm - 6pm / 7.30am - 9am**  
**Thursday 24th April / Friday 25th April**

**Fill any bags with clean clothes, paired shoes, hats & scarves, belts, swimwear, jewellery, new or opened unwanted fragrances**



**Emma 07943 054591**

**[thelittlerecyclers.co.uk](http://thelittlerecyclers.co.uk)**



**May 3rd, 2025**

**7:30pm @ The Village Hall, Eversholt**



Scan for tickets!

See your friends and neighbours as  
you've never seen them before!

**Live music...dance...drink...food**

**Get your tickets now  
before it's too late!**  
[www.4everlove.uk](http://www.4everlove.uk)

Raising funds for Eversholt Lower School

**Ever-Ready Ever- Respectful Ever- Safe**





**EASTER  
HOLIDAYS**

**PREMIER  
HOLIDAY  
CAMPS**

 Premier Education | **INSPIRING  
ACTIVITY**

**RUSSELL LOWER  
SCHOOL**



**SCAN HERE FOR  
MORE INFORMATION**  
or visit [premier-education.com/holiday-camps](https://premier-education.com/holiday-camps)

 Trustpilot  
  
Based on over 20,000 reviews

## VENUES

Russell Lower School, Queens  
Road, Ampthill, Bedford,  
MK45 2TD

## DATES

7th April - 17th April

## TIMINGS AND PRICES

-8:00am - 5:30pm (£48.50)

-9:00am - 3:30pm (£39.50)

**20% AUTOMATIC DISCOUNT**

**(ENDS 24TH MARCH)**

**+10% ADDITIONAL DISCOUNT**

**(CODE: 'EARLYEASTER10' ENDS 3RD MARCH)**

Mix it up this half term with our multi-  
activity holiday camps!

These camps are a perfect blend of  
activities for all ages, combining different  
sports with a variety of team games.

Every day is different, with a mix of fun  
activities that children may not have tried  
before - from archery - arts and crafts.

Book now for a half-term full of fun!



**SCAN HERE FOR  
MORE INFORMATION**

or visit [premier-education.com/holiday-camps](https://premier-education.com/holiday-camps)



**15%  
SIBLING  
DISCOUNT**

  
Registered

AGES 6-17



# SUMMER SCHOOL

**11th-15th or 18th-22nd August 2025**

TADS THEATRE  
CONGER LANE  
TODDINGTON  
LU5 6BT

- SINGING
- ACTING
- DANCING
- PERFORMANCE SKILLS
- FULL SHOW ON THE FRIDAY!

**10am-4pm  
(1pm-6pm Friday)**

**REGISTER  
HERE:**

[chairman@tadstheatre.org](mailto:chairman@tadstheatre.org)

**£150 FOR THE  
WEEK.**

**£120 PER  
ADDITIONAL  
SIBLINGS**

**(3 TICKETS  
INCLUDED PER  
CHILD)**

**FLEXIBLE  
PAYMENT  
PLAN  
AVAILABLE**



# The Pyramid Schools Trust Term Dates 2024 - 2025

School Holiday
 Pupil Day
 Bank Holiday
Training Day – all schools
Training Day – all schools except Harlington Upper
Training Day – Harlington Upper only

September 2024							October 2024							November 2024							December 2024						
Mon	2	9	16	23	30		Mon		7	14	21	28		Mon		4	11	18	25		Mon		2	9	16	23	30
Tue	3	10	17	24			Tue	1	8	15	22	29		Tue		5	12	19	26		Tue		3	10	17	24	31
Wed	4	11	18	25			Wed	2	9	16	23	30		Wed		6	13	20	27		Wed		4	11	18	25	
Thu	5	12	19	26			Thu	3	10	17	24	31		Thu		7	14	21	28		Thu		5	12	19	26	
Fri	6	13	20	27			Fri	4	11	18	25			Fri	1	8	15	22	29		Fri		6	13	20	27	
Sat	7	14	21	28			Sat	5	12	19	26			Sat	2	9	16	23	30		Sat		7	14	21	28	
Sun	8	15	22	29			Sun	6	13	20	27			Sun	3	10	17	24			Sun	1	8	15	22	29	

January 2025							February 2025							March 2025							April 2025						
Mon		6	13	20	27		Mon		3	10	17	24		Mon		3	10	17	24	31	Mon		7	14	21	28	
Tue		7	14	21	28		Tue		4	11	18	25		Tue		4	11	18	25		Tue	1	8	15	22	29	
Wed	1	8	15	22	29		Wed		5	12	19	26		Wed		5	12	19	26		Wed	2	9	16	23	30	
Thu	2	9	16	23	30		Thu		6	13	20	27		Thu		6	13	20	27		Thu	3	10	17	24		
Fri	3	10	17	24	31		Fri		7	14	21	28		Fri		7	14	21	28		Fri	4	11	18	25		
Sat	4	11	18	25			Sat	1	8	15	22			Sat	1	8	15	22	29		Sat	5	12	19	26		
Sun	5	12	19	26			Sun	2	9	16	23			Sun	2	9	16	23	30		Sun	6	13	20	27		

May 2025							June 2025							July 2025							August 2025						
Mon		5	12	19	26		Mon		2	9	16	23	30	Mon		7	14	21	28		Mon		4	11	18	25	
Tue		6	13	20	27		Tue		3	10	17	24		Tue	1	8	15	22	29		Tue		5	12	19	26	
Wed		7	14	21	28		Wed		4	11	18	25		Wed	2	9	16	23	30		Wed		6	13	20	27	
Thu	1	8	15	22	29		Thu		5	12	19	26		Thu	3	10	17	24	31		Thu		7	14	21	28	
Fri	2	9	16	23	30		Fri		6	13	20	27		Fri	4	11	18	25			Fri	1	8	15	22	29	
Sat	3	10	17	24	31		Sat		7	14	21	28		Sat	5	12	19	26			Sat	2	9	16	23	30	
Sun	4	11	18	25			Sun	1	8	15	22	29		Sun	6	13	20	27			Sun	3	10	17	24	31	



# The Pyramid Schools Trust Term Dates 2025 - 2026

School Holiday
 Pupil Day
 Bank Holiday
Training Day – all schools
Training Day – all schools except Harlington Upper
Training Day Harlington Upper only

September 2025							October 2025							November 2025							December 2025						
Mon	1	8	15	22	29		Mon		6	13	20	27		Mon		3	10	17	24		Mon	1	8	15	22	29	
Tue	2	9	16	23	30		Tue		7	14	21	28		Tue		4	11	18	25		Tue	2	9	16	23	30	
Wed	3	10	17	24			Wed	1	8	15	22	29		Wed		5	12	19	26		Wed	3	10	17	24	31	
Thu	4	11	18	25			Thu	2	9	16	23	30		Thu		6	13	20	27		Thu	4	11	18	25		
Fri	5	12	19	26			Fri	3	10	17	24	31		Fri		7	14	21	28		Fri	5	12	19	26		
Sat	6	13	20	27			Sat	4	11	18	25			Sat	1	8	15	22	29		Sat	6	13	20	27		
Sun	7	14	21	28			Sun	5	12	19	26			Sun	2	9	16	23	30		Sun	7	14	21	28		

January 2026							February 2026							March 2026							April 2026						
Mon		5	12	19	26		Mon		2	9	16	23		Mon		2	9	16	23	30	Mon		6	13	20	27	
Tue		6	13	20	27		Tue		3	10	17	24		Tue		3	10	17	24	31	Tue		7	14	21	28	
Wed		7	14	21	28		Wed		4	11	18	25		Wed		4	11	18	25		Wed	1	8	15	22	29	
Thu	1	8	15	22	29		Thu		5	12	19	26		Thu		5	12	19	26		Thu	2	9	16	23	30	
Fri	2	9	16	23	30		Fri		6	13	20	27		Fri		6	13	20	27		Fri	3	10	17	24		
Sat	3	10	17	24	31		Sat		7	14	21	28		Sat		7	14	21	28		Sat	4	11	18	25		
Sun	4	11	18	25			Sun	1	8	15	22	29		Sun	1	8	15	22	29		Sun	5	12	19	26		

May 2026							June 2026							July 2026							August 2026						
Mon		4	11	18	25		Mon	1	8	15	22	29		Mon		6	13	20	27		Mon		3	10	17	24	31
Tue		5	12	19	26		Tue	2	9	16	23	30		Tue		7	14	21	28		Tue		4	11	18	25	
Wed		6	13	20	27		Wed	3	10	17	24			Wed	1	8	15	22	29		Wed		5	12	19	26	
Thu		7	14	21	28		Thu	4	11	18	25			Thu	2	9	16	23	30		Thu		6	13	20	27	
Fri	1	8	15	22	29		Fri	5	12	19	26			Fri	3	10	17	24	31		Fri		7	14	21	28	
Sat	2	9	16	23	30		Sat	6	13	20	27			Sat	4	11	18	25			Sat	1	8	15	22	29	
Sun	3	10	17	24	31		Sun	7	14	21	28			Sun	5	12	19	26			Sun	2	9	16	23	30	

The law requires that a parent ensures that their child receives a full and efficient education. If you enrol your child at a school, then you must ensure that they attend regularly. Regular school attendance is defined as being 'in accordance with the rules prescribed by the school' and means that if the school is open for 190 days, then this is what your child is expected to attend.

# EVERY SCHOOL DAY COUNTS

Don't miss out on the education you deserve.



# EVERY SCHOOL DAY MATTERS



## Penalty Notice Fines for absence from school are changing

From 19<sup>th</sup> August 2024 Penalty Notice fines increase to £160 for each parent, for each child.



You can be fined if your child has a total of 5 days of unauthorised absences in 10 school weeks, for things like:

- being late after the register has closed
- truancy
- taking a holiday without permission from the school
- or if a headteacher isn't satisfied for the reason for missing school

Over a rolling 3-year period the sanctions are:

- 1st offence – £160 reduced to £80 if paid within 21 days
- 2nd offence – £160
- 3rd offence – Court hearing and up to £2,500 fine, or up to 3 months in prison and a criminal record

For more information go to:  
[www.centralbedfordshire.gov.uk/missing-school](http://www.centralbedfordshire.gov.uk/missing-school)



# Parentline

A confidential text messaging advice and support line for Bedfordshire parents and carers of children aged 0-19.

**Text: 07507 331456**

Parenting advice and support    Sleep    Continence

Immunisations    Mental health    Minor illness

Speech    Behaviour    Temper tantrums

Infant feeding    Diet & exercise

Child development    Parenting

and much, much more....

We might inform someone if we were concerned about your safety but we would usually speak to you first. Your messages are stored and can be seen by other healthcare staff who follow the same confidentiality rules. We aim to reply to you within one working day and you should get an immediate message back to confirm we've received your text. If you need help before you hear back from us contact your GP, nearest walk in centre or dial 111. Our text number does not receive voice calls or MMS picture messages. We support messaging from UK mobile numbers only (which does not include messages sent from landlines, international mobile numbers and some 'number masking' mobile apps). To find out what we do with your information, please internet search: "NHS CCS privacy notice" or use this link [bit.ly/nhsprivacynotice](https://www.nhs.uk/privacy-notice). Prevent the health professional from sending messages to you, text STOP to our number. Messages are charged at your usual rates.



Bedfordshire adult and children's community health services are provided in partnership by East London NHS Foundation Trust (ELFT) and Cambridgeshire Community Services (CCS) NHS Trust

 ChatHealth

 Pop-ins